

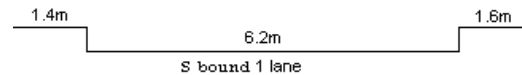
YEAR 2023

COVERAGE (B) STATION 2405

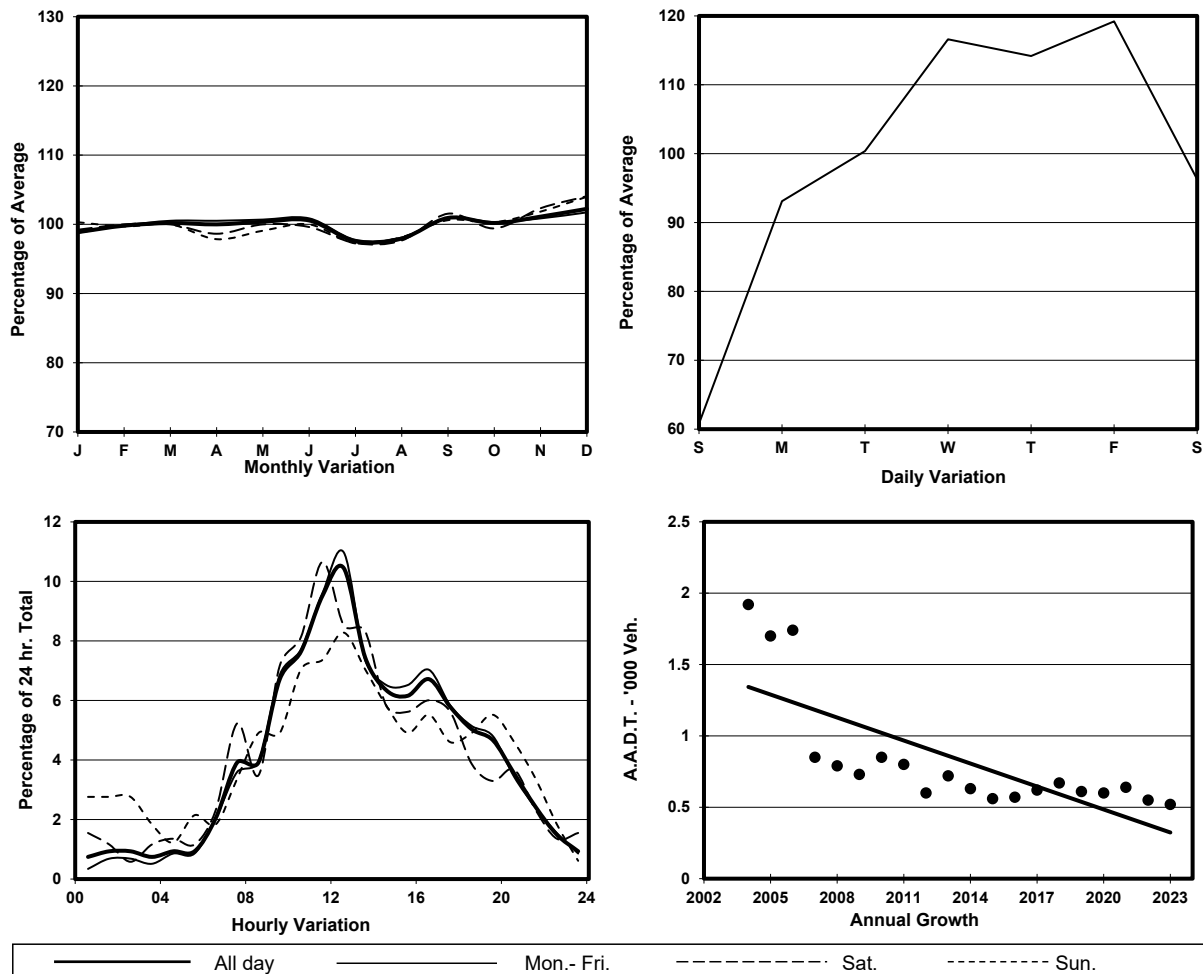
ROAD NETWORK MAJOR

ROAD TYPE LOCAL DISTRIBUTOR

LINK COCHRANE ST (from QUEEN'S RD C to WELLINGTON ST)



## 1. TRAFFIC FLOW VARIATION AND GROWTH



## 2. TRAFFIC CHARACTERISTICS (BY DIRECTION)

Parameter	All - Day	Mon. - Fri.	Sat.	Sun.
<b>SOUTH BOUND</b>				
A.A.D.T.	520	580	520	330
R 12 / 24 - %	79.7	81.1	78.5	68.7
R 16 / 24 - %	91.8	93.3	89.1	84
AM Peak Hour	0900-1000	0900-1000	0900-1000	0800-0900
One-way flow at AM peak hour	40	40	40	20
T - % (AM)	-	-	-	-
PM Peak Hour	1600-1700	1600-1700	1600-1700	1600-1700
One-way flow at PM peak hour	40	40	30	20
T - % (PM)	-	-	-	-
Prop.of commercial vehicles - 16 hr.	-	1.2	-	-
A.A.D.T.	-	-	-	-
R 12 / 24 - %	-	-	-	-
R 16 / 24 - %	-	-	-	-
AM Peak Hour	-	-	-	-
One-way flow at AM peak hour	-	-	-	-
T - % (AM)	-	-	-	-
PM Peak Hour	-	-	-	-
One-way flow at PM peak hour	-	-	-	-
T - % (PM)	-	-	-	-
Prop.of commercial vehicles - 16 hr.	-	-	-	-

## 3. OTHER INFORMATION AND COMMENT

**4. Vehicle classification and occupancy - Monday to Friday**

Time		Class of vehicle									
		Motor Cycle	Private Car	Taxi	Private LB	PLB	Goods veh.		Non Fr. Bus	Fr. Bus	
							Light	M & H		SD	DD
0700-0800	Pro	0.0	29.4	11.8	0.0	0.0	58.8	0.0	0.0	0.0	0.0
	Ocp	0.0	1.2	1.5	0.0	0.0	1.1	0.0	0.0	0.0	0.0
0800-0900	Pro	0.0	11.1	33.3	0.0	0.0	44.4	11.1	0.0	0.0	0.0
	Ocp	0.0	1.0	1.3	0.0	0.0	1.3	1.0	0.0	0.0	0.0
0900-1000	Pro	3.7	29.6	22.2	0.0	0.0	44.4	0.0	0.0	0.0	0.0
	Ocp	1.0	1.1	1.0	0.0	0.0	1.3	0.0	0.0	0.0	0.0
1000-1100	Pro	3.8	46.2	11.5	0.0	0.0	38.5	0.0	0.0	0.0	0.0
	Ocp	1.0	1.2	1.0	0.0	0.0	1.6	0.0	0.0	0.0	0.0
1100-1200	Pro	15.0	37.5	7.5	0.0	0.0	37.5	2.5	0.0	0.0	0.0
	Ocp	1.0	1.2	1.0	0.0	0.0	1.5	2.0	0.0	0.0	0.0
1200-1300 Peak hour	Pro	15.4	35.9	7.7	0.0	0.0	41.0	0.0	0.0	0.0	0.0
	Ocp	1.0	1.5	1.3	0.0	0.0	1.5	0.0	0.0	0.0	0.0
1300-1400	Pro	18.2	36.4	9.1	0.0	0.0	36.4	0.0	0.0	0.0	0.0
	Ocp	1.0	1.1	1.5	0.0	0.0	1.5	0.0	0.0	0.0	0.0
1400-1500	Pro	4.3	65.2	4.3	0.0	0.0	21.7	4.3	0.0	0.0	0.0
	Ocp	1.0	1.9	1.0	0.0	0.0	1.8	1.0	0.0	0.0	0.0
1500-1600	Pro	10.5	36.8	15.8	0.0	0.0	36.8	0.0	0.0	0.0	0.0
	Ocp	1.0	1.1	1.7	0.0	0.0	1.7	0.0	0.0	0.0	0.0
1600-1700	Pro	0.0	50.0	14.3	0.0	0.0	35.7	0.0	0.0	0.0	0.0
	Ocp	0.0	1.6	1.0	0.0	0.0	1.4	0.0	0.0	0.0	0.0
1700-1800	Pro	6.4	51.1	6.4	0.0	0.0	36.2	0.0	0.0	0.0	0.0
	Ocp	1.3	1.5	1.0	0.0	0.0	1.4	0.0	0.0	0.0	0.0
1800-1900	Pro	53.3	20.0	6.7	0.0	0.0	20.0	0.0	0.0	0.0	0.0
	Ocp	1.0	1.0	1.0	0.0	0.0	1.0	0.0	0.0	0.0	0.0
1900-2000	Pro	53.3	40.0	6.7	0.0	0.0	0.0	0.0	0.0	0.0	0.0
	Ocp	1.1	1.0	1.0	0.0	0.0	0.0	0.0	0.0	0.0	0.0
2000-2100	Pro	23.1	46.2	15.4	0.0	0.0	7.7	7.7	0.0	0.0	0.0
	Ocp	1.0	1.2	1.5	0.0	0.0	2.0	1.0	0.0	0.0	0.0
2100-2200	Pro	16.7	83.3	0.0	0.0	0.0	0.0	0.0	0.0	0.0	0.0
	Ocp	1.0	1.8	0.0	0.0	0.0	0.0	0.0	0.0	0.0	0.0
2200-2300	Pro	0.0	80.0	0.0	0.0	0.0	20.0	0.0	0.0	0.0	0.0
	Ocp	0.0	1.5	0.0	0.0	0.0	2.0	0.0	0.0	0.0	0.0
16 hours	Pro	13.1	41.5	10.4	0.0	0.0	33.8	1.2	0.0	0.0	0.0
	Ocp	1.0	1.4	1.2	0.0	0.0	1.4	1.3	0.0	0.0	0.0

**Legend: Pro.** Proportion of vehicles in % (Sum may not add up to 100% due to figure rounding)\*

**Ocp.** Average occupancy of vehicles including both driver and passengers\*

**M&H** Medium and Heavy

\* All traffic data are collected from combined bounds